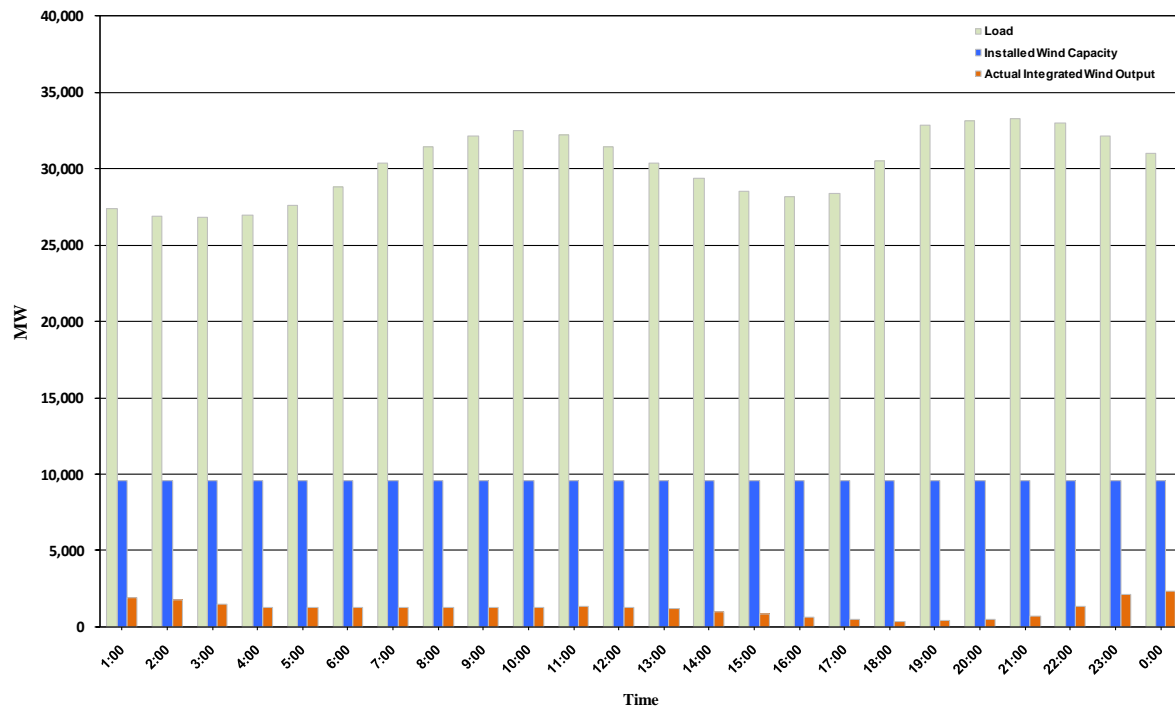




## ERCOT Grid Operations Wind Integration Report: 11/26/10

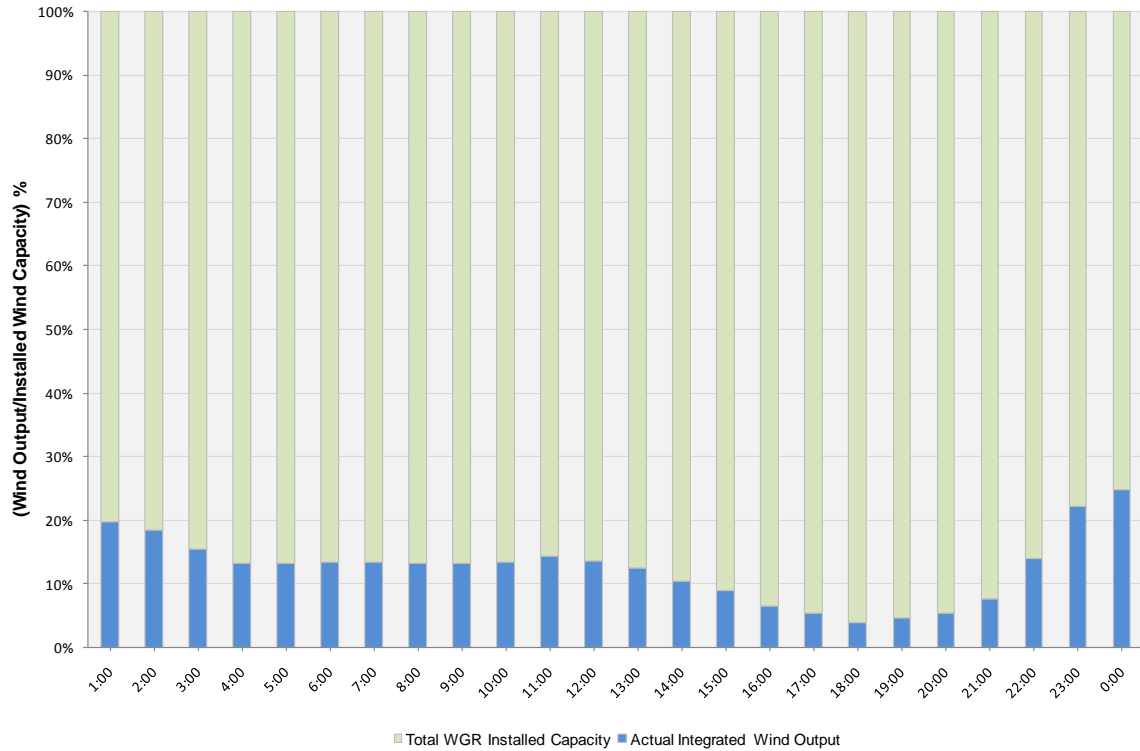
Peak Load	33,252 MW
Load Peak Hour	21
Wind Record 06/12/10	7016 MW
Max Wind value	2495 MW
Wind Peak Hour	23:59:40
Wind Integration %	8.18

Hourly Average Actual Load vs. Actual Wind Output  
11-26-2010

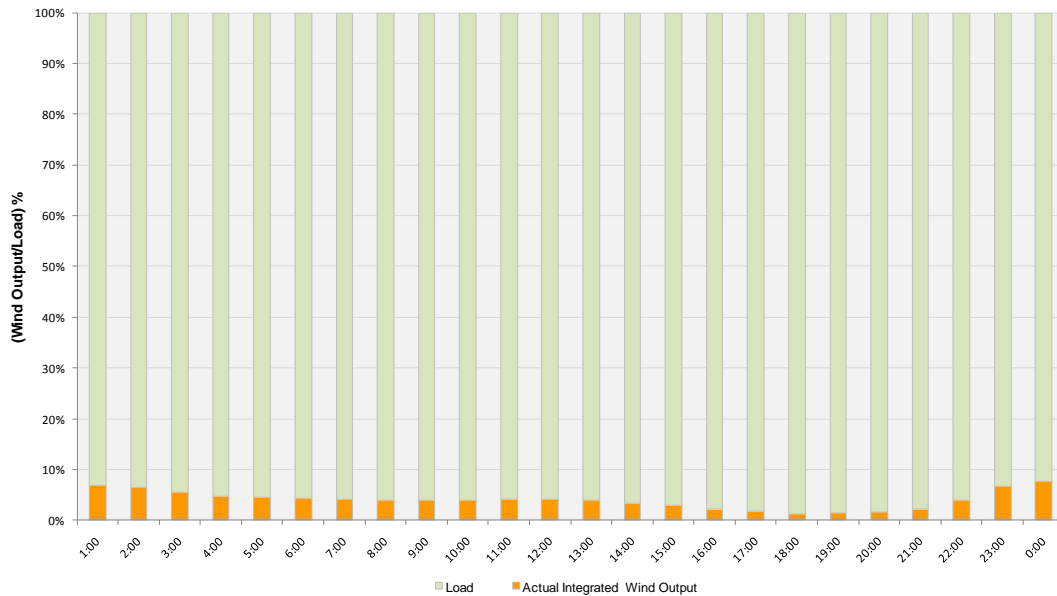




**Actual Wind Output as a Percentage of the Total Installed Wind Capacity**  
**11-26-2010**



**Actual Wind Output as a Percentage of the ERCOT Load**  
**11-26-2010**





ERCOT Load vs. Actual Wind Output 11/19/10 - 11/26/10

